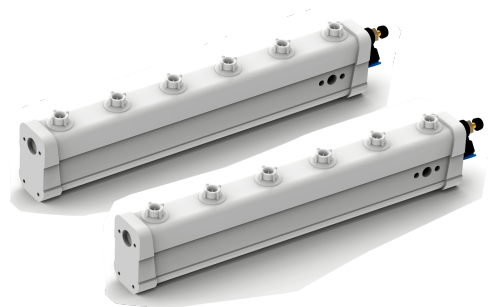


产品特点

- 正、负离子输出比可调,可用于离子平衡度的调整;
- 正、负离子输出频率可调,可适用于不同的消电距离;
- 实现较快的消电速度;
- 高压异常时声报警;
- 离子输出特性,用遥控器调整;
- 具备防电击功能,防止对人体造成电击伤害;
- 可实现联机通讯,监控离子棒工作状态;



Product Features

- Positive and negative ion output ratio adjustable and can be used for ion balance adjustment ;
- Output frequency of positive and negative ion is adjustable ;
- Applied to different elimination range at high speed;
- Audible and visual alarm in case of abnormal high voltage;
- Ion output characteristics adjusted with remote control;
- Anti-shock function protecting people from electric shock;
- On-line communication can be achieved to monitor the working state of ion eliminator;

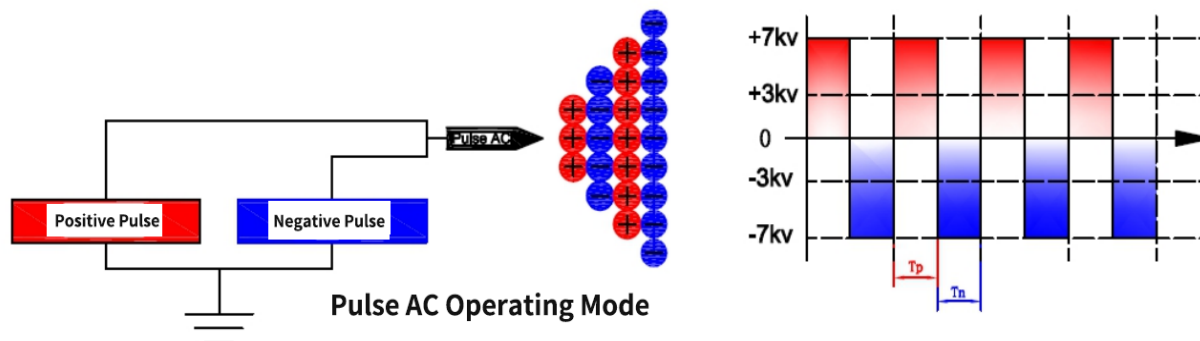
额定规格/性能 Ratings and Specifications

| | |
|---|--|
| 型号Model | SE-IQ1000-L□ |
| 输入电压input voltage | DC 24V |
| 输入电流Input current | < 600mA |
| 功率power | 10W |
| 工作电压working voltage | ±5000V |
| 离子发射ion emission | 脉冲交流pulse AC |
| 发射电极emission electrode | SUS |
| 放电结构discharge structure | 电阻偶合resistance coupling |
| 输出频率output frequency | 1,3,5,10,20,30,50Hz; (出厂设置factory setting: 30Hz) |
| 占空因数duty factor | 10%—90% |
| 消电范围 elimination range | L*W*H: {300-3000 (针间距needle gap 50mm) }*300*1000mm |
| 安装距离mounting distance | 100→1000mm |
| 离子平衡 ionic balance | ≤ ±30V (AVE) |
| 消电时间 discharge time | ≤2S |
| 报警指示alarm indication | 电源网口指示灯, 高压报警指示灯 (绿色正常工作, 红色高压异常) Indicator light of the source network port, indicator light of high-voltage alarm (Green: working normally, Red: high-voltage abnormal) |
| 状态监控monitoring | RS485通讯, 机器可串联联网监控RS485 communication, devices can be installed in series to be monitored |
| 气流压力air pressure | ≤0.6MPa |
| 带节流阀 throttle valve 气源接头air supply connector | Φ8-G1/8 白色White |
| 工作温度 temperature | 0°C-50°C |
| 工作湿度humidity | < 70% |
| 外形尺寸dimension | L*W*H: {300-3000 (针间距needle gap 50mm) }*35*63.5mm |
| 适配电源线长度cable length | 阻燃flame-resistant PVC、ABS、AL、SUS |
| 棒体材质housing material | 1.8m |

消电距离和速度关系 Elimination distance & speed

| 工作频率 frequency (Hz) | 安装距离 mounting distance (mm) | 设置场所application |
|------------------------|--------------------------------|---|
| 50 | 100-300 | 薄膜等快速移动物体; 光电、半导体器件等低平衡度要求; Fast moving objects such as thin films; photoelectric and semiconductor devices with Low balance requirements; |
| 30 | 300-400 | 薄膜等快速移动物体; 光电器件等低平衡度要求; Fast moving objects such as thin films; Photoelectric device and other devices with low balance requirements |
| 20 | 300-600 | 薄膜等快速移动物体; 电子器件等低平衡度要求; Fast moving objects such as thin films; electronic devices with Low balance requirements |
| 10 | 600-800 | 物料填充、传输Material filling and transfer |
| 5 | 800-1000 | 稍远距离消电remote elimination |
| 3 | 1000-1200 | 较远距离消电remote elimination |
| 1 | 1200-1500 | 远距离消电remote elimination |

工作方式示意图 (脉冲AC) operating (Impulse AC)



外形尺寸 Dimensions

